



August 26, 2019

ADA Title III instructions for new construction and alterations.

4.19 Lavatories and Mirrors

4.19.6* Mirrors. Mirrors shall be mounted with the bottom edge of the reflecting surface no higher than 40 in (1015 mm) above the finish floor (see Fig. 31).

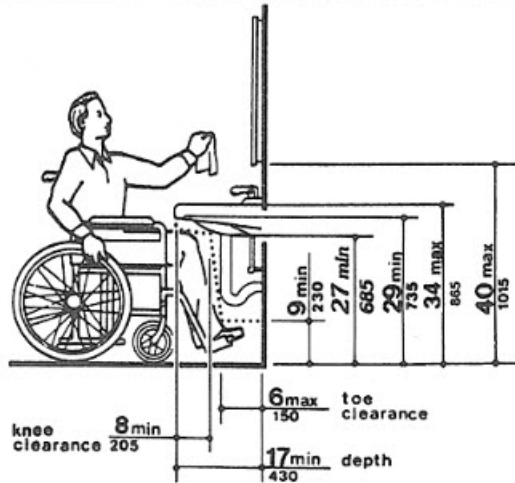


Fig. 31
Lavatory Clearances

California Equivalent Code

1115B.9 Toilet Room Accessories

1115B.9.1.2 Mirrors should be mounted with the bottom edge no higher than 40 inches (1016 mm) from the floor.

Please use required building codes.

Building codes are sets of regulations governing the design, construction, alteration and maintenance of structures. They specify the minimum requirements to adequately safeguard the health, safety and welfare of building occupants.

All our mirrors have a frame width of 1.625" (1 5/8"). Please take this measurement into account for placement.

Disclaimer of Liability

All information in this document is provided "as is", with no guarantee of completeness, accuracy, timeliness or of the results obtained from the use of this information, and without warranty of any kind, express or implied, including, but not limited to warranties of performance, merchantability and fitness for a particular purpose.